

# NU VPN Usage Manual (ver.1.10)

To use the VPN service, you need to install the module provided by F5 Networks on your PC, etc. You also need to use a dedicated service (VPN portal) to get a temporary account that is valid for 10 hours. The details will be explained as follows.

The connection method is SSL-VPN. Normally, it is not necessary to set special communication permission settings such as firewalls.

## 目次

0. Advance Preparation.....	2
0. 1. Start using THERS account.....	2
1. How to connect to VPN.....	10
1. 1. When using the Edge Client app.....	10
1. 1. 1 Install EdgeClient.....	10
1. 1. 2 VPN connection with the "Edge Client" app.....	12
1. 2. When using a web browser.....	18
1. 3. When using an Android smartphone.....	22
1. 4. When using an iPhone.....	33

# 0. Advance Preparation

## 0. 1. Start using THERS account

Multi-factor authentication VPN requires multi-factor authentication with a THERS account.

Please refer to the URL below and start using the THERS account in advance

<https://icts.nagoya-u.ac.jp/ja/services/thersaccount/ms365start.html>

Contact

<https://thersac.icts.nagoya-u.ac.jp/hc/ja/requests/new>

# 1. How to connect to VPN

## 1. 1. When using the Edge Client app

### 1. 1. 1 Install EdgeClient

(Once installed on your computer, you do not need to install it from the next time.)

Download "Edge Client" from the following location.

[Edge Client Download\(for Windows\)](#)

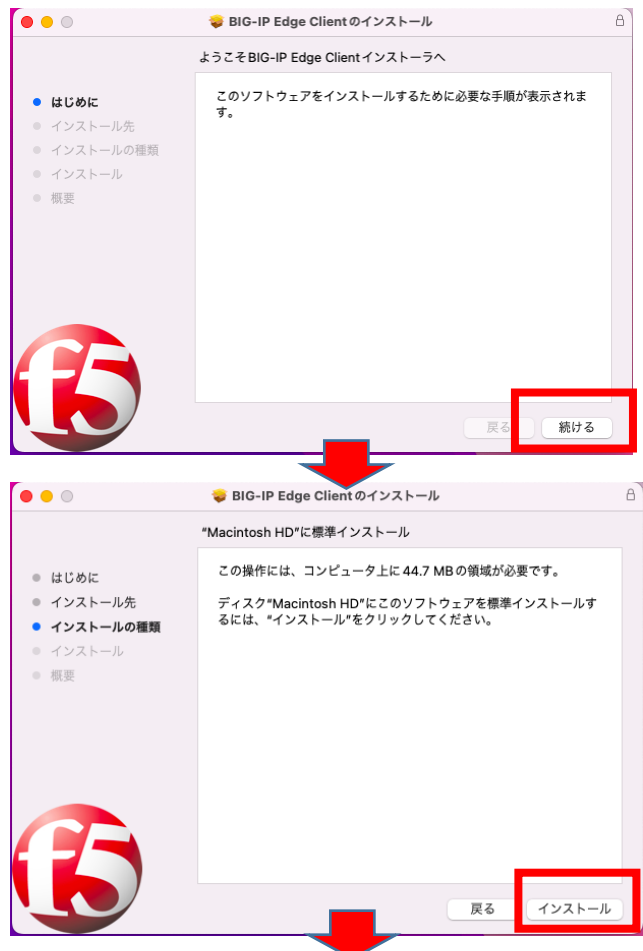
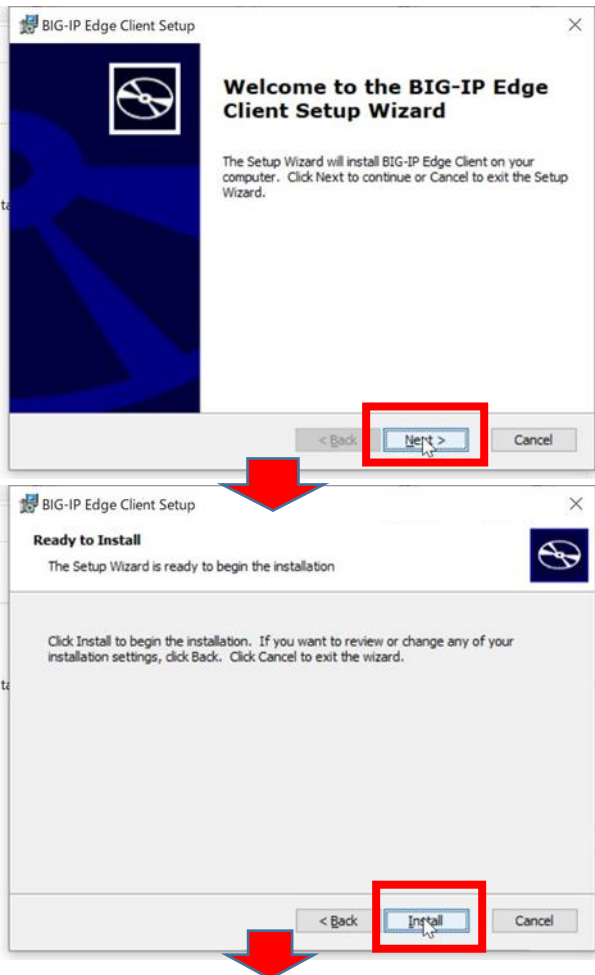
[Edge Client Download \(for Mac\)](#)

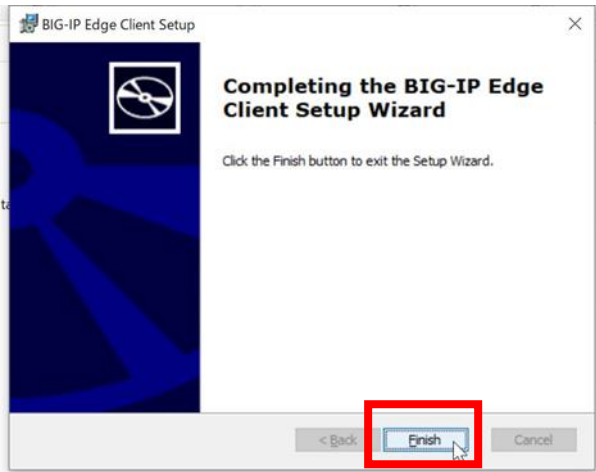
Run the installer. (.exe Or .pkg) of Edge Client.

Select in the order on the right to complete the installation.: [ Next ] → [ Install ] → [ Finish ]

Windows

macOS



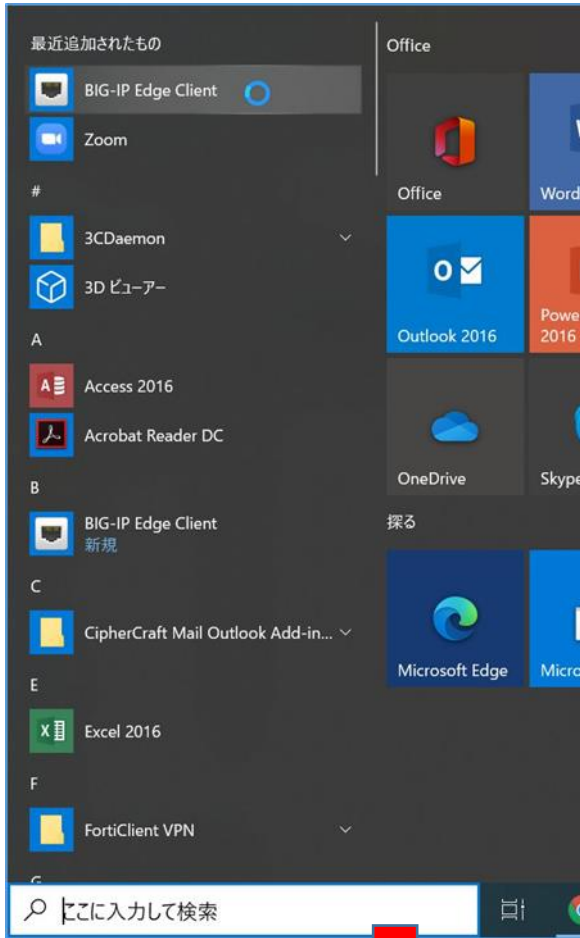


Additionally, a pop-up may appear asking you to confirm access to the folder where you executed the .pkg file, or to confirm whether you want to delete the .pkg file, but there is no problem with either.

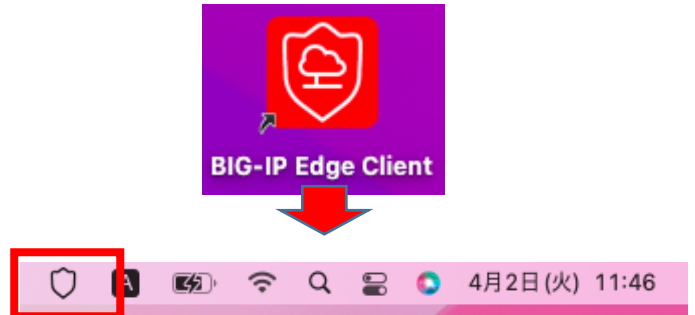
# 1. 1. 2 VPN connection with the "Edge Client" app

Launch the Edge Client app .

Windows



macOS



When you start the app, a shield-shaped icon will appear on the right side of the top menu bar.

(Depending on the environment, a screen with a cautionary and a confirmation button that says "I understand the above security risks before connecting" appears immediately after startup.)

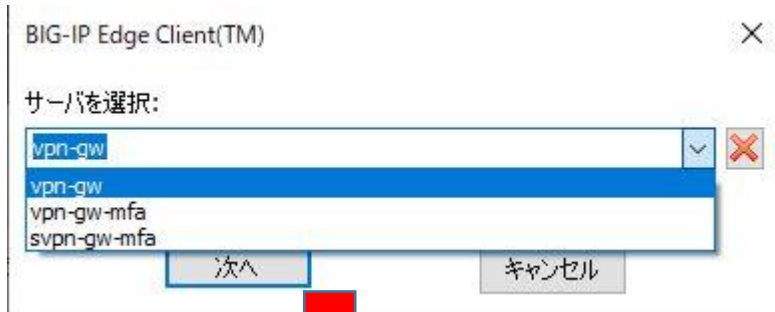
Select [Change Server]



Select the destination server and connect the VPN

Server to select : **vpn-gw**

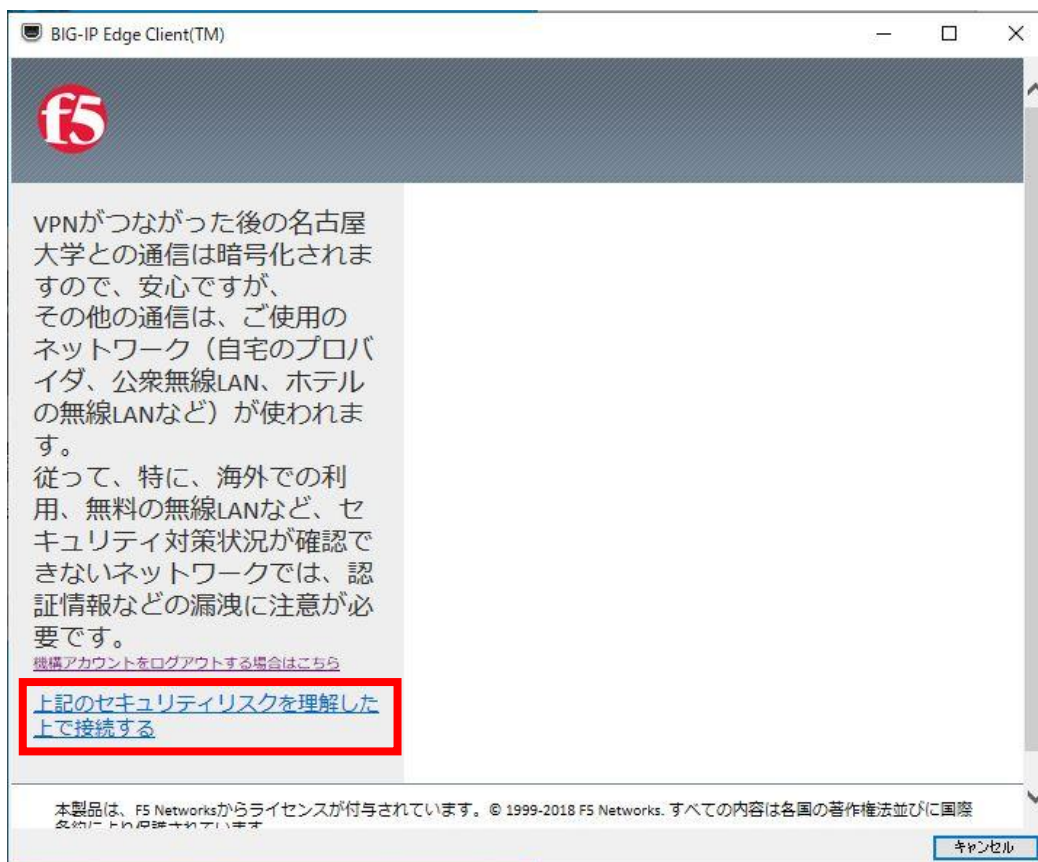
If "vpn-gw" is not displayed on the selected server, enter 「 <https://vpn-gw.nagoya-u.ac.jp/> 」 manually.



Select the connection destination and select [Turn on VPN].

Select the connection destination and select [Next].

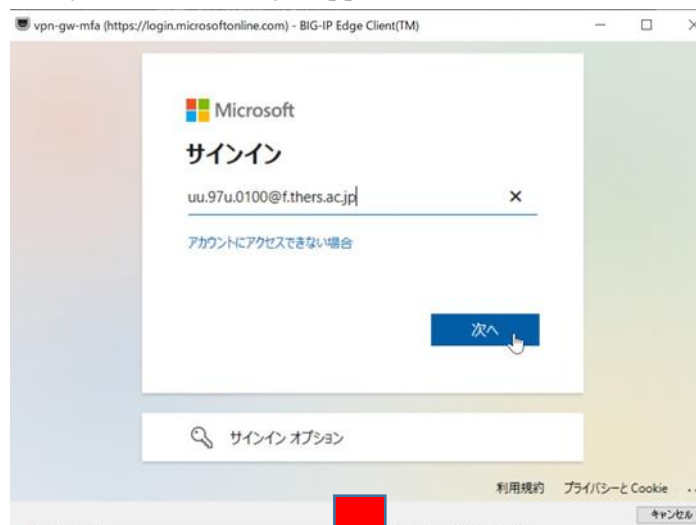
Read the cautionary statement that appears on the screen and click "I understand the above security risks before connecting."

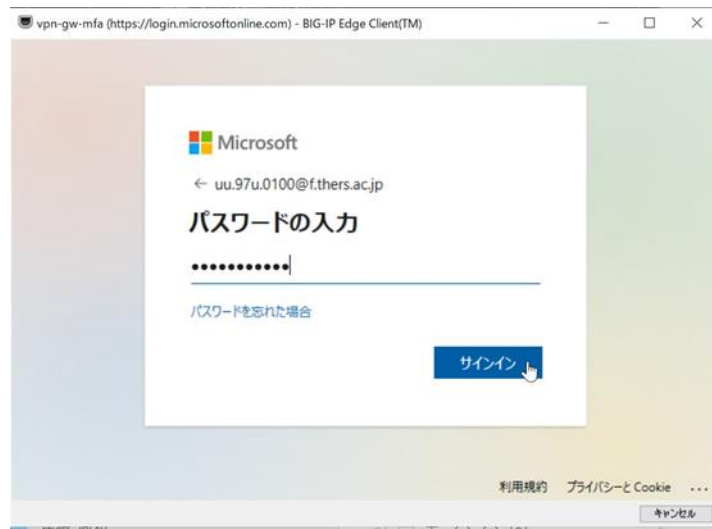


Sign in with the THERS account.

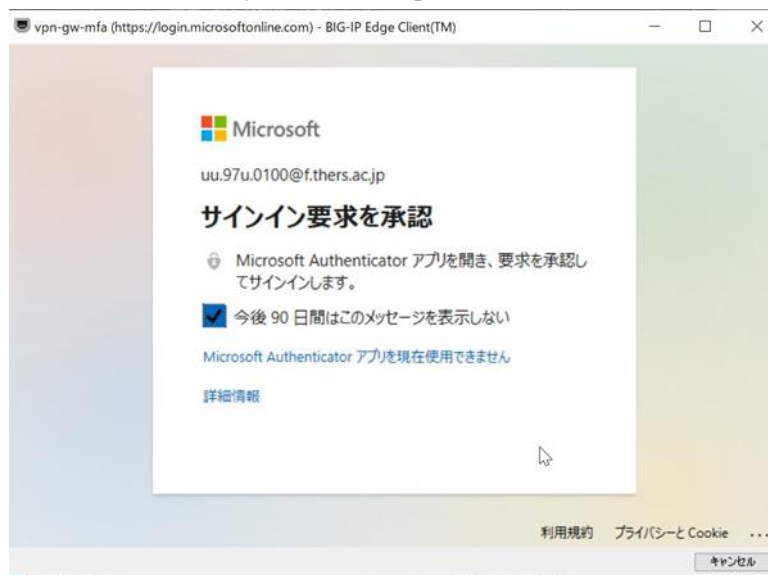
If you are signed in to the other system with the same THERS account at this time, you cannot sign in here.

Please sign out from other systems as it may happen.





A screen requesting approval from the Authenticator app will be displayed (it will disappear automatically after smartphone authentication).



Open the Authenticator app on your smartphone and select [Approve].





Make sure you are connected to the VPN.



On macOS it will be a connected icon.



# 1. How to connect to VPN

## 1. 1. When using the Edge Client app

### 1. 1. 1 Install EdgeClient

(Once installed on your computer, you do not need to install it from the next time.)

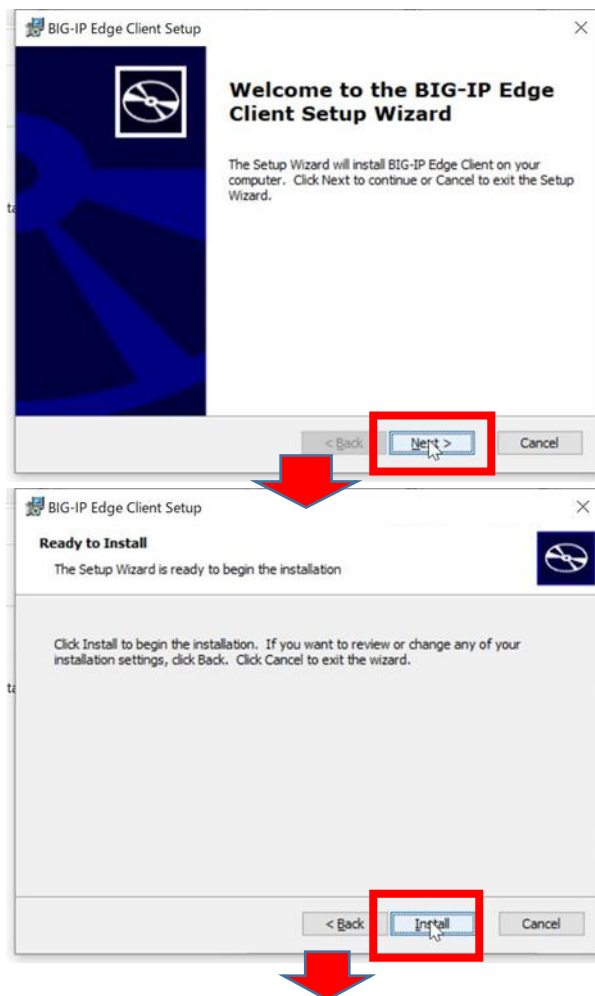
Download "Edge Client" from the following location.

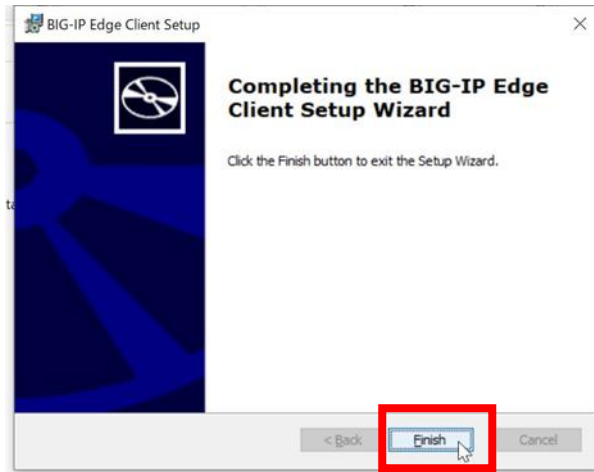
[Edge Client Download\(for Windows\)](#)

[Edge Client Download \(for Mac\)](#)

Run the installer. (.exe Or .pkg) of Edge Client.

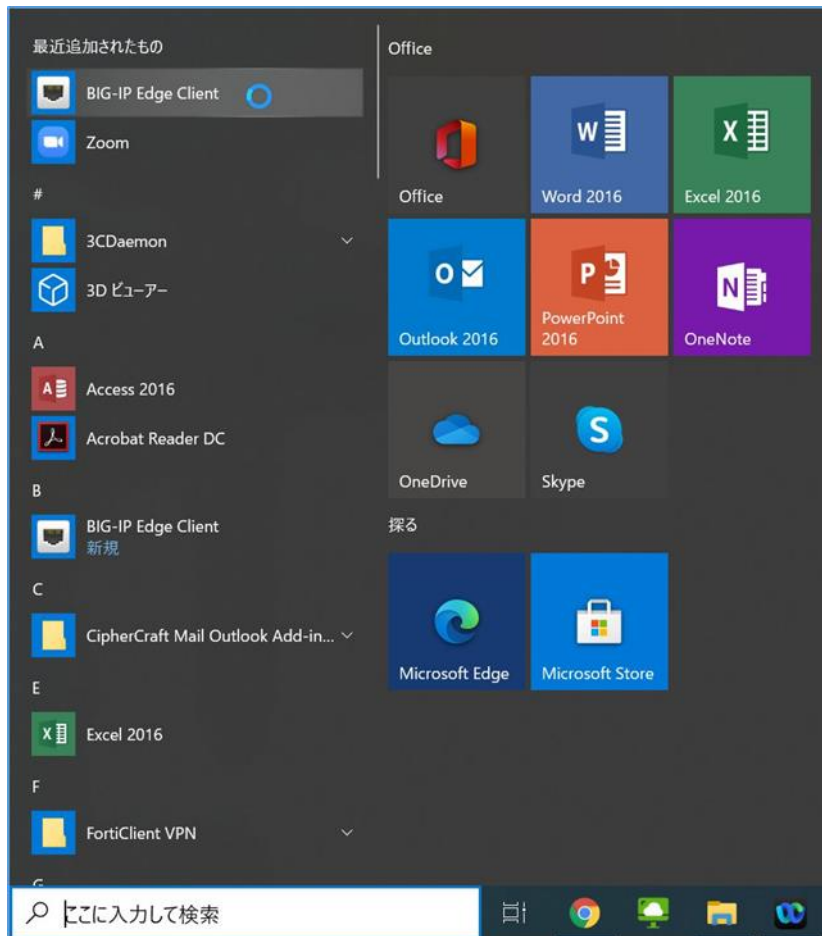
Select in the order on the right to complete the installation.: [ Next ] → [ Install ] → [ Finish ]





1. 1. 2 VPN connection with the "Edge Client" app

Launch the Edge Client app,



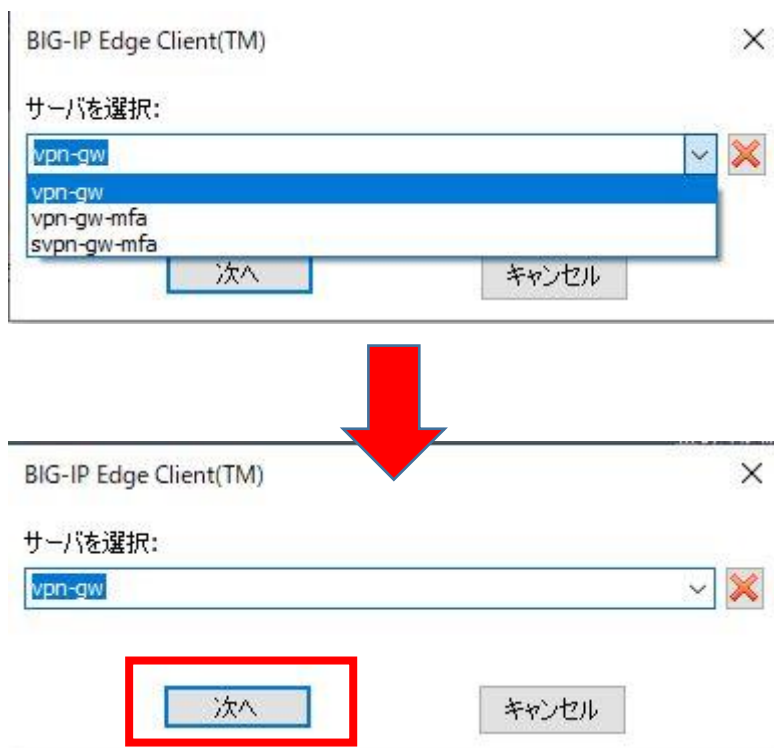
Please select [Server changes] .



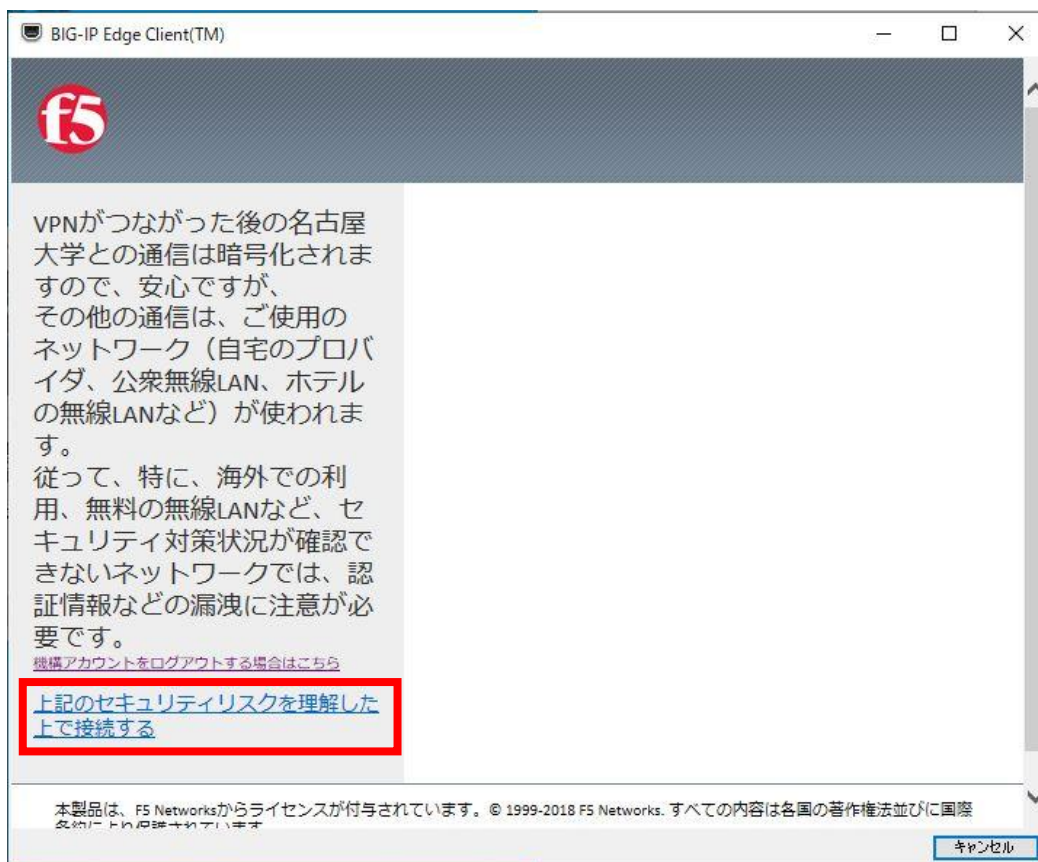
Select the VPN connection destination and select [Next].

## Please select “vpn-gw”

If "vpn-gw" is not displayed on the selected server, enter "https://vpn-gw.nagoya-u.ac.jp/" manually.



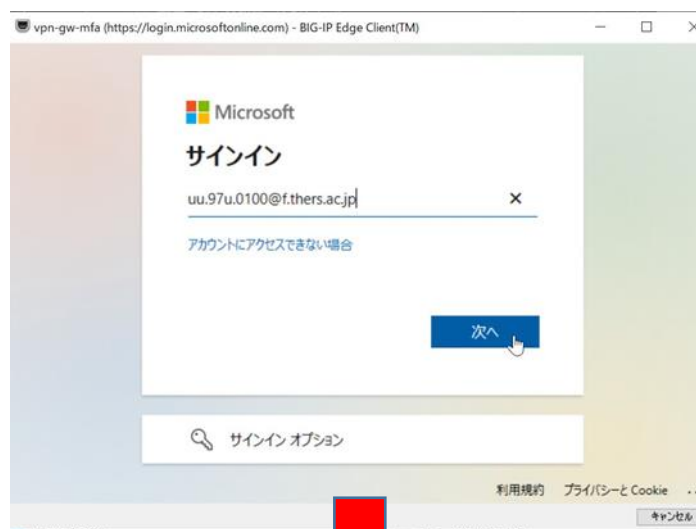
Read the cautionary statement that appears on the screen and click "I understand the above security risks before connecting."

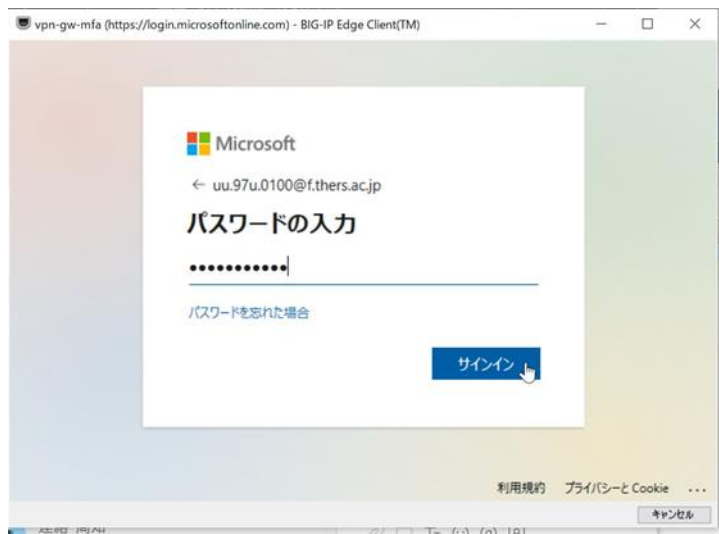


Sign in with the THERS account.

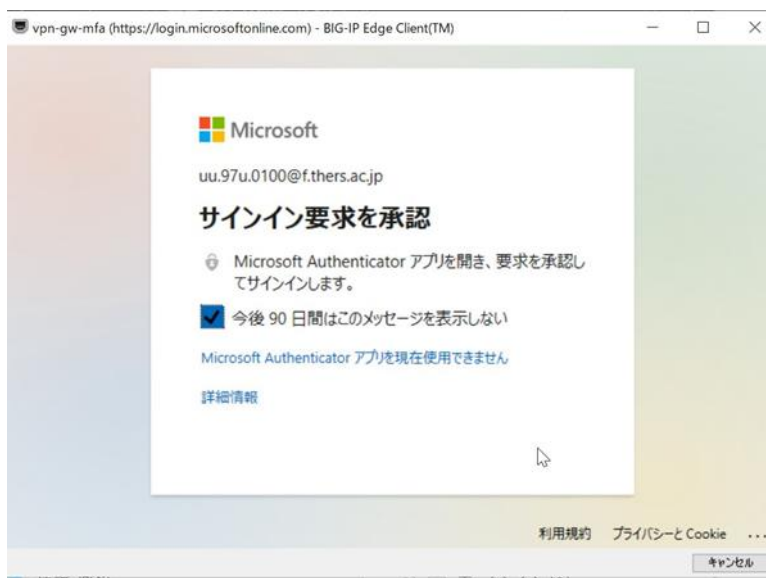
If you are signed in to the other system with the same THERS account at this time, you cannot sign in here.

Please sign out from other systems as it may happen.





A screen requesting approval from the Authenticator app will be displayed (it will disappear automatically after smartphone authentication).



Open the Authenticator app on your smartphone and select [Approve].





Make sure you are connected to the VPN.



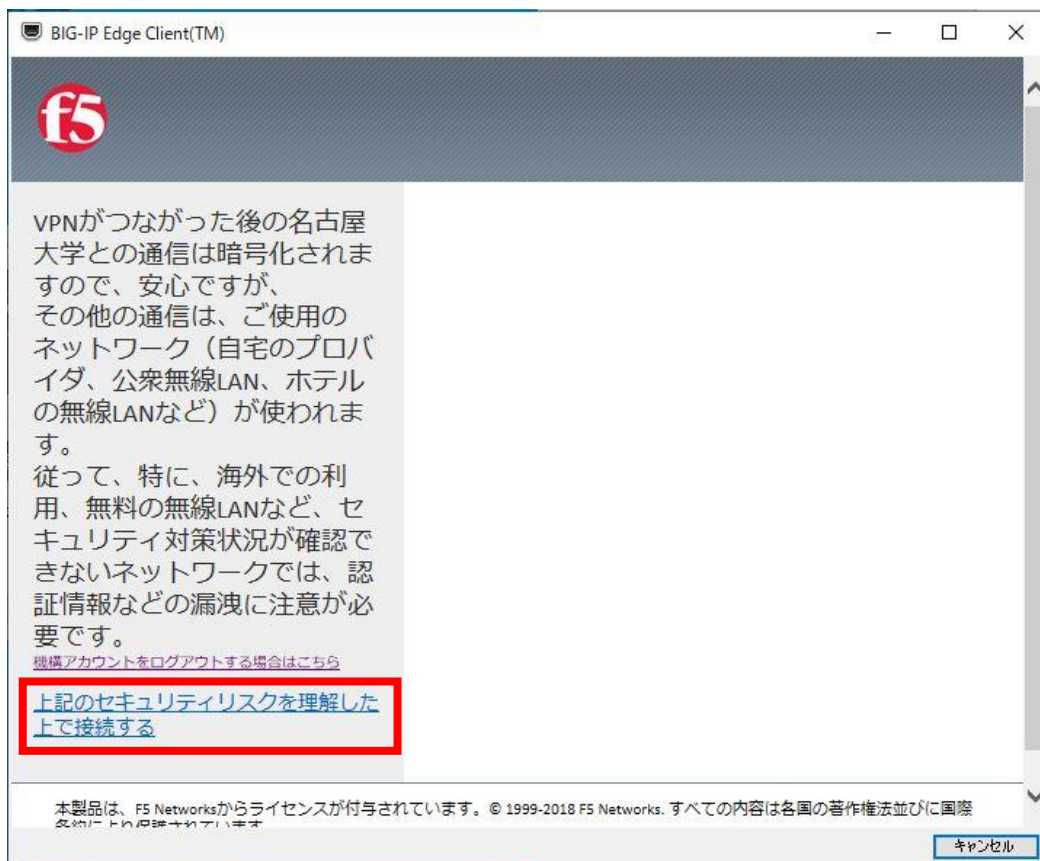
## 1. 2. When using a web browser

Only for Windows, the browser is supported. In addition, there is a possibility that the browser that could be connected up to now may suddenly become unable to connect due to the OS version upgrade.

If you are using MacOS or cannot connect with a browser, use "[Edge Client](#)" to connect.

Address to log in : <https://vpn-gw.nagoya-u.ac.jp>

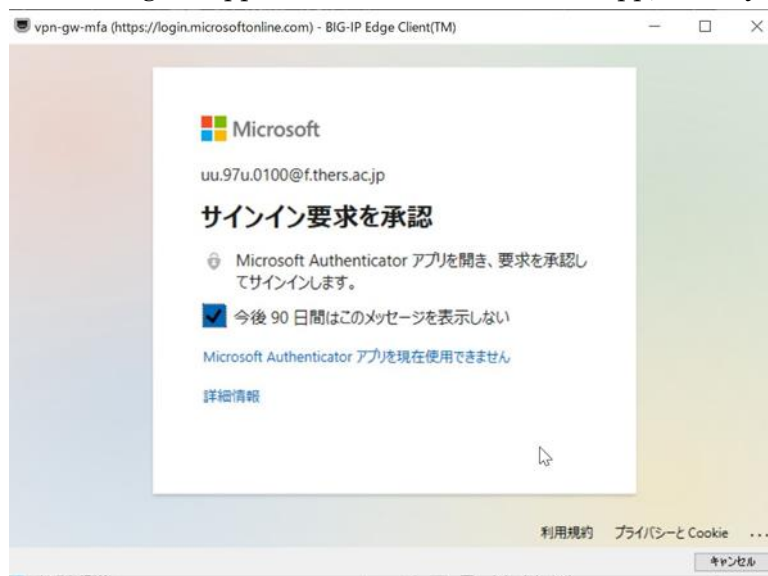
Read the cautionary statement that appears on the screen and click "I understand the above security risks before connecting."



Sign in with the THERS account.



When you see the screen asking for approval in the Authenticator app, check your smartphone.

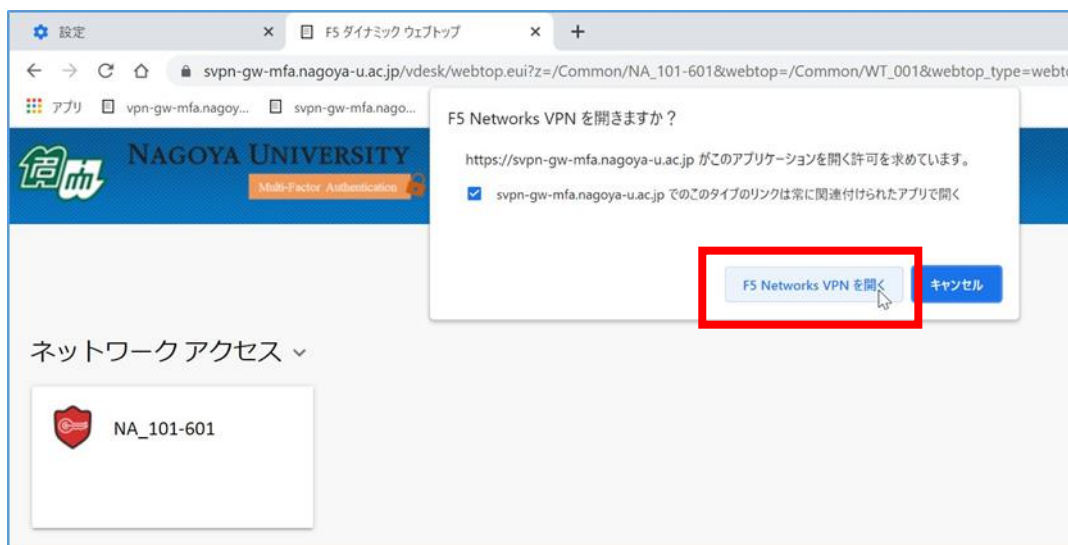


Open the Authenticator app on your smartphone and select [Approve].



Check your browser.

※ If the F5 Network VPN app linkage pop-up appears, select "Open".



Make sure you are connected to the VPN.

The screenshot shows a web browser window with the address bar displaying "/Common/NA\_101-601 - https://svpn-gw-mfa.nagoya-u.ac.jp - F5 VPN". The page features the F5 logo in the top left corner. A red-bordered box highlights a green status indicator and the text "接続されました" (Connected). In the top right corner, there is a "切断" (Disconnect) button. The main content area contains a table with traffic statistics:

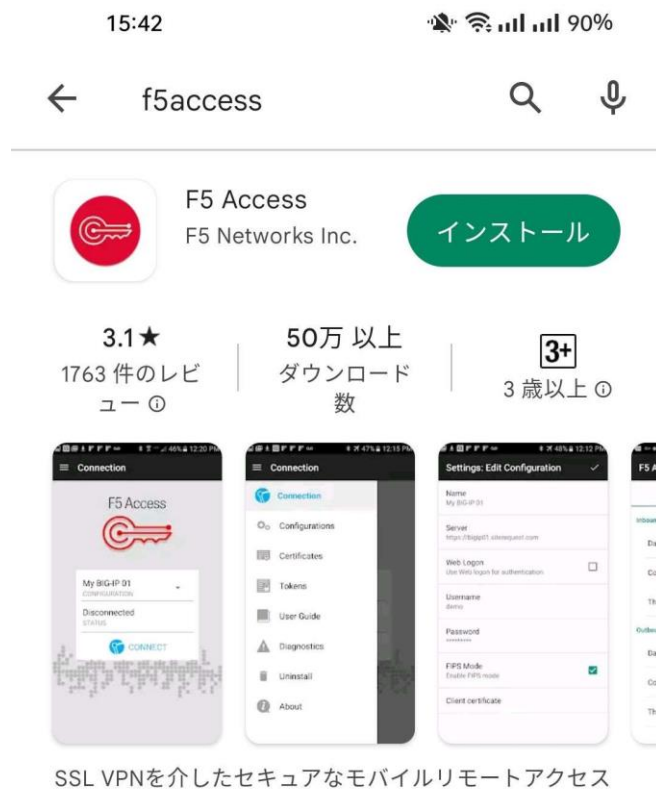
トラフィック タイプ	送信	圧縮	受信	圧縮
<b>ネットワーク アクセス</b>				
- ネットワークトンネル	0 B	0%	0 B	0%
- 最適化されたアプリケーション	0 B	0%	0 B	0%
<b>合計</b>	<b>0 B</b>	<b>0%</b>	<b>0 B</b>	<b>0%</b>

Below the table, there is a blue link "+ 詳細を表示" (Show details). At the bottom left of the page, the text "完了" (Completed) is visible.

### 1. 3. When using an Android smartphone

We have tested the functionality with Android version 12 and F5 Access version 3.0.10. However, there are various types and versions of smartphones, and we cannot provide support for all of them. If you encounter any issues or problems with usage or connection, please investigate and resolve them on your own.

First, install the "F5 Access" app from the Play Store.



Once installed, open the "F5 Access" app.





In the F5 Access app, select "Server Configuration".



Enter a recognizable name in the Configuration Name field (e.g., NUVPN).  
For the Server URL field, enter "https://vpn-gw.nagoya-u.ac.jp".  
After entering the information, click "Next".



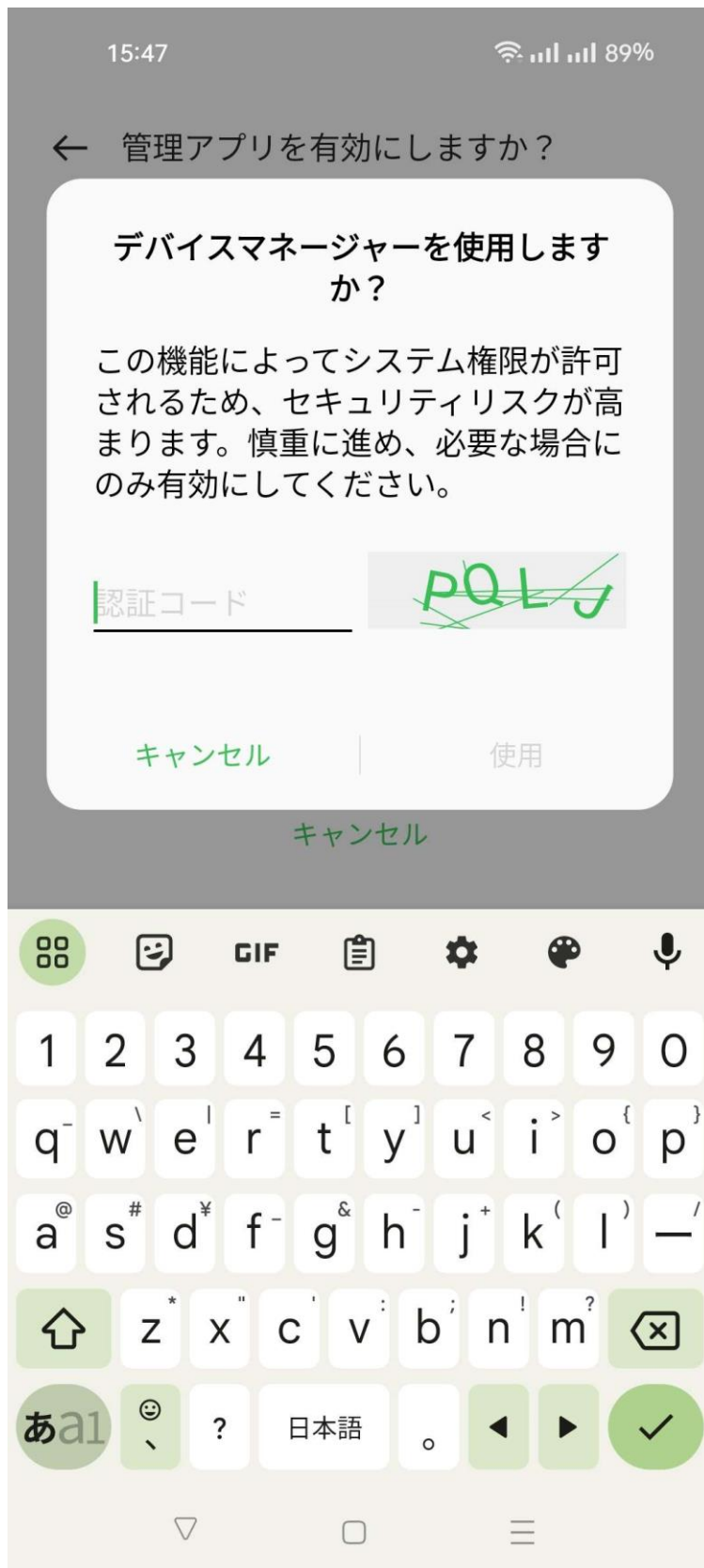


Check the "Web Logon" checkbox and tap the checkmark icon in the upper right corner.



Press "Connect".

The next time you open the F5 Access app, this screen will be displayed.



If prompted with "Use Device Manager?", enter the authentication code and press "Use" to proceed.

## ← 管理アプリを有効にしますか？

 F5 Access

デバイスのPIN またはパスワードが有効である場合、サーバー アクセス パスワードを保存するために F5 Access が承認されます。次に、デバイスのロックを解除するために失敗した試行をアクティブに監視します。失敗した試行がしきい値を超えると、F5 Access は、セキュリティ確保のため、保存したサーバー アクセス パスワードを削除します。

注:アプリケーションを後で削除する場合は、F5 Access を、[アプリケーション]::[設定]::[セキュリティ]::[デバイス管理者を選択] で無効にする必要があります

この管理アプリを有効にすると、アプリ (F5 Access) に次の操作を許可することになります:

**パスワードルールの設定**

画面ロックのパスワードとPINの長さで使用できる文字を制御します。

**画面ロック解除試行の監視**

画面のロック解除に正しくないパスワードを入力した回数

アプリの削除

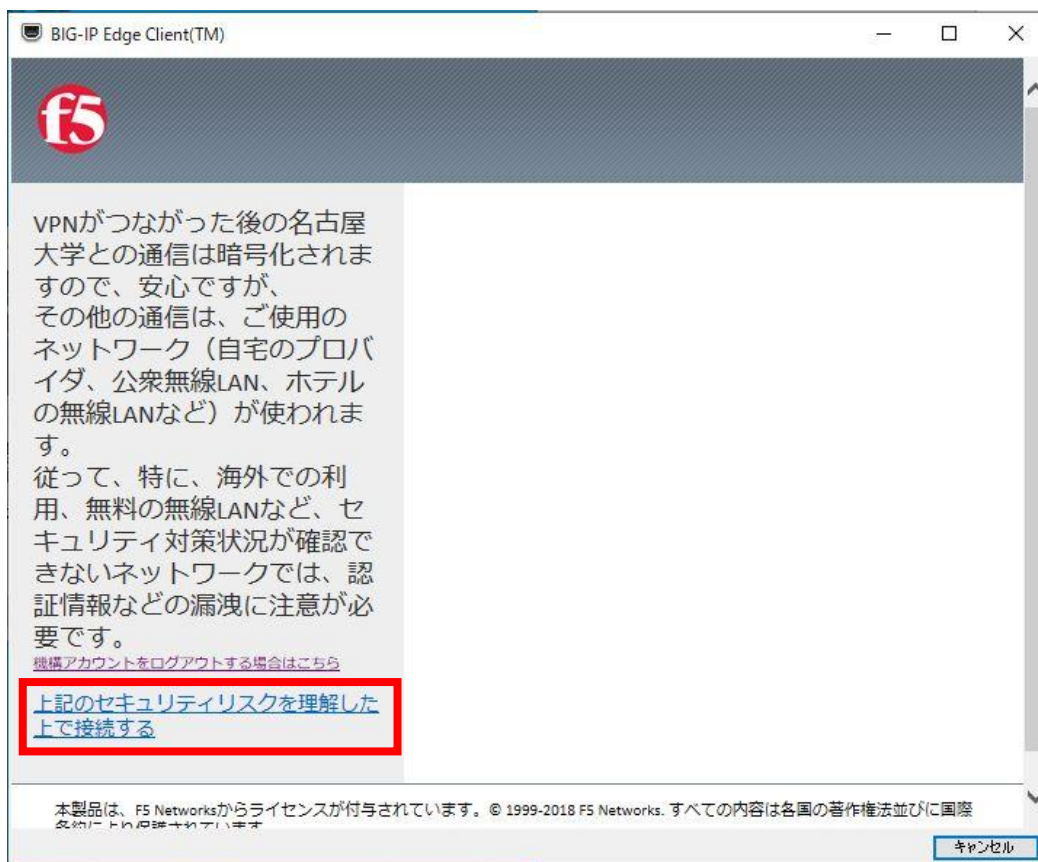
管理アプリを有効にする

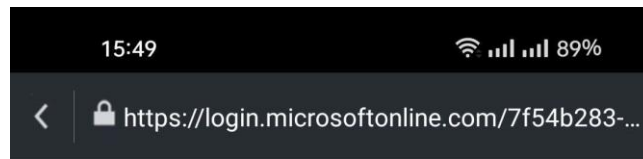
キャンセル



If prompted with "Enable Management App?", select "Enable Management App" to proceed.

Read the cautionary statement that appears on the screen and click "I understand the above security risks before connecting."






## サインイン

ab.12c.3456@x.thers.ac.jp

[アカウントにアクセスできない場合](#)

次へ

 サインイン オプション

[利用規約](#) [プライバシーと Cookie](#) ...



Sign in with your THERS account (thers.ac.jp) on the authentication screen for the institution account.



If prompted with "Allow F5 Access to establish VPN connection?", select "Allow" to proceed.



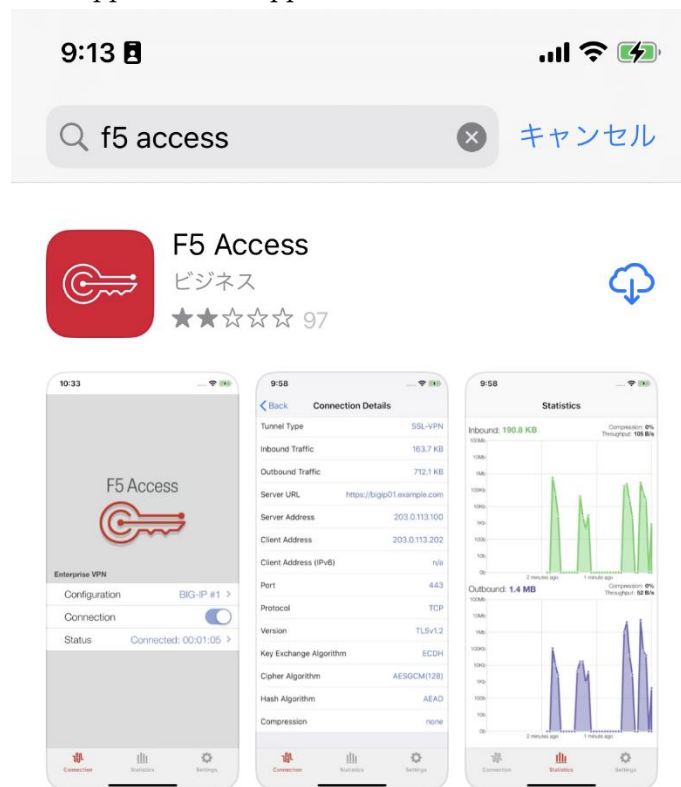
Once "Connected" is displayed, the VPN connection is established. To disconnect the VPN connection, press "Disconnect".



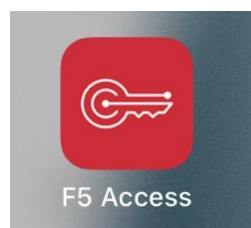
## 1. 4. When using an iPhone

We have tested the functionality with iOS version 16.5.1 and F5 Access version 3.0.13 on iPhone. However, there are various types and versions of smartphones, and we cannot provide support for all of them. If you encounter any issues or problems with usage or connection, please investigate and resolve them on your own.

First, install the "F5 Access" app from the App Store.



Once installed, open the "F5 Access" app.





If the contract confirmation screen appears, review the contract and select "Agree".

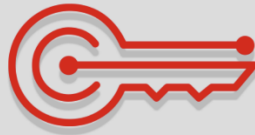


If prompted for notification permissions, select "Allow".

9:15



# F5 Access



エンタープライズVPN

接続先設定

新規追加 >

状況

切断されました



接続



統計情報



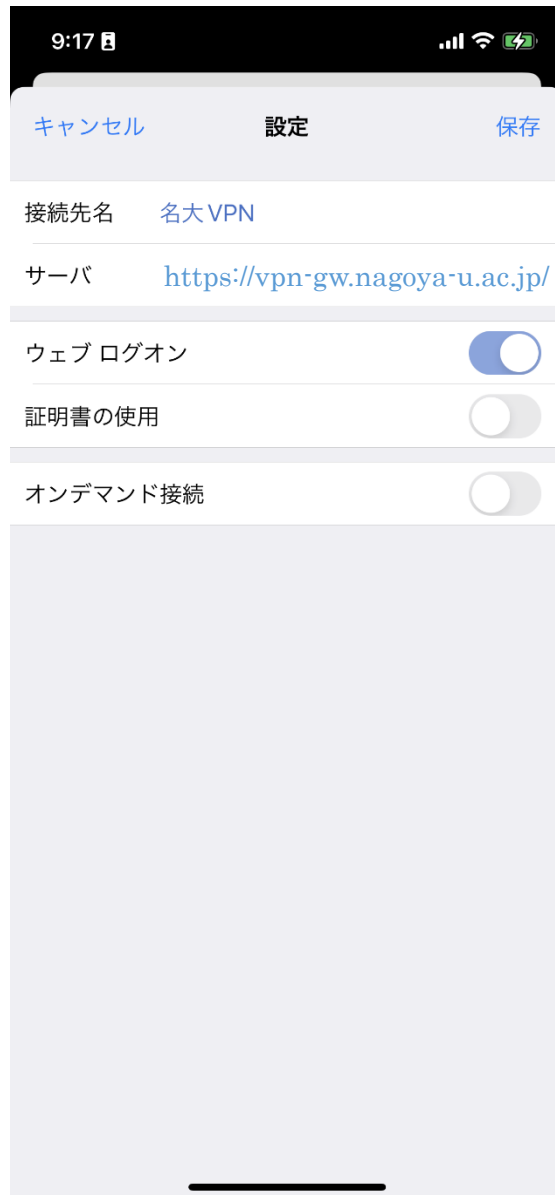
設定

Select "Add New Connection Configuration".



Enter a recognizable name for the Connection Name (e.g., NUVPN).

For the Server field, enter "https://vpn-gw.nagoya-u.ac.jp".



Slide the Web Logon switch to the right to turn it on.

Once you've set the Connection Name, Server, and Web Logon switch, press "Save".



If prompted with "Allow VPN Configuration Addition", select "Allow".

iPhone のパスコードを入力  
VPN 構成を追加

○ ○ ○ ○ ○ ○

1	2 ABC	3 DEF
4 GHI	5 JKL	6 MNO
7 PQRS	8 TUV	9 WXYZ
0		

キャンセル

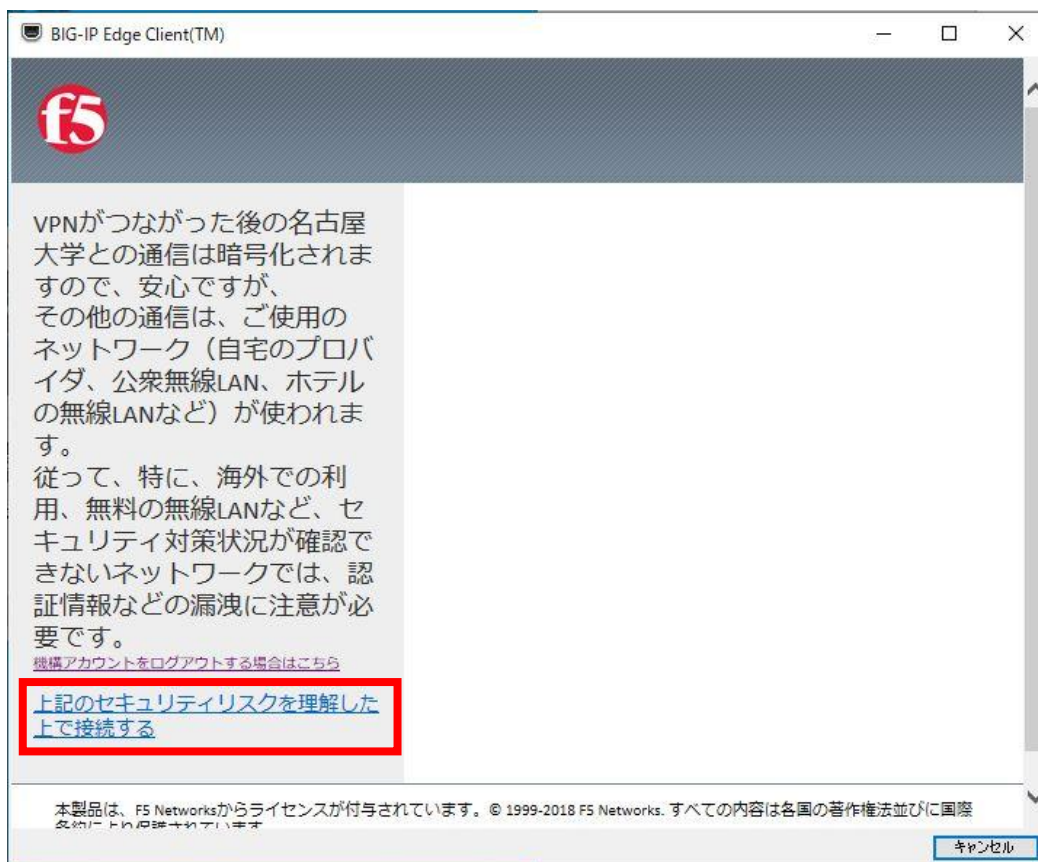
When prompted to enter a passcode during VPN Configuration Addition permission, enter the passcode.



Once you're back on the F5 Access screen, slide the Connect switch to the right to turn it on.



Read the cautionary statement that appears on the screen and click "I understand the above security risks before connecting."



If the settings are correct, the secure login screen shown above will appear.

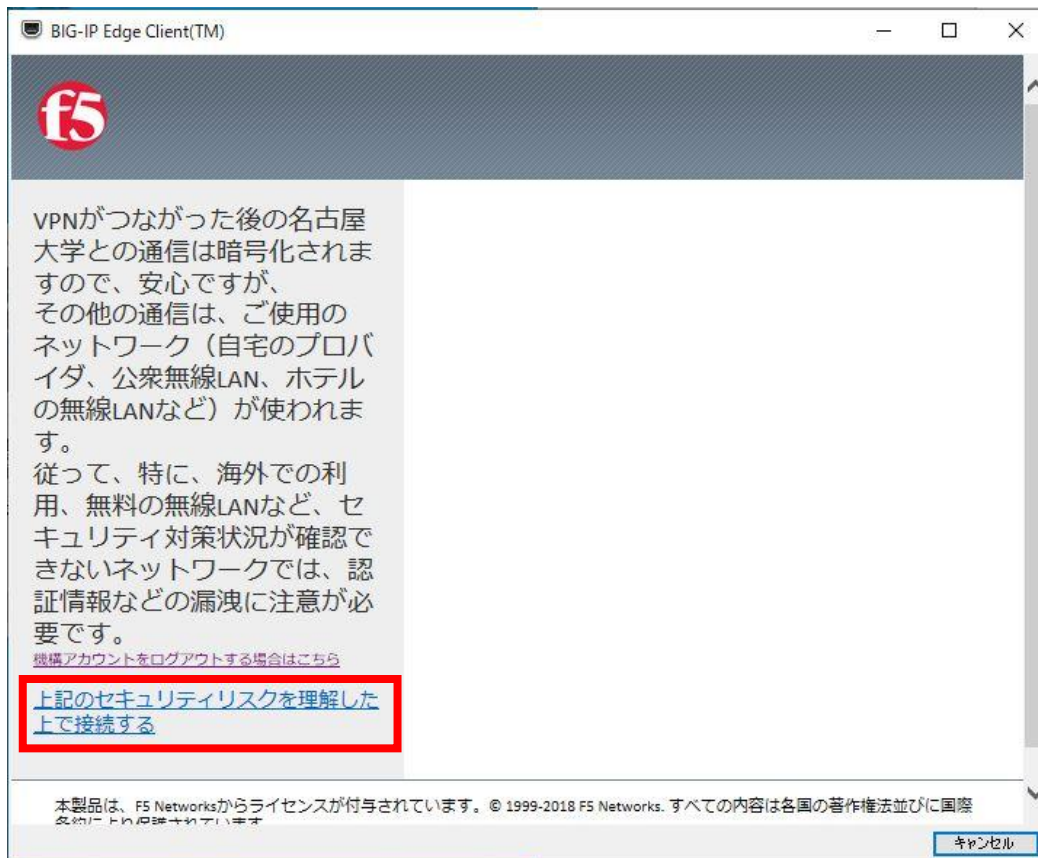


Sign in with your institution account (thers.ac.jp) using multi-factor authentication on the institution account authentication screen.



If the F5 Access screen appears again, slide the Connect switch to the right to turn it on again. After, Read the cautionary statement that appears on the screen and click "I understand the above security risks before connecting.

**Note:** Pages 36 and 37 seem to repeat when starting F5 Access for the first time. From the second time onward, the connection will be established as shown on pages 414, 425, and directly to page 38.



9:21



# F5 Access



エンタープライズVPN

接続先設定 名大VPN >

接続

状況 接続されました: 00:00:04 >



If "Connected" is displayed, the VPN connection is established.



To disconnect the VPN connection, slide the Connect switch to the left to turn it off.